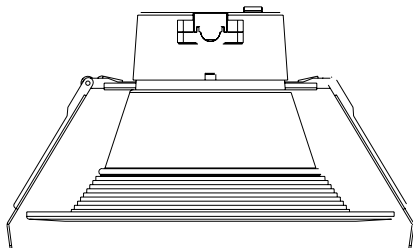


## USE AND CARE GUIDE

4 Inch/ 6 Inch/ 8 Inch/ 10 Inch LED Retrofit  
Commerical Downlight



1

### SAFETY INSTRUCTION

Please read and understand all instructions before operate or install the product. Failure to do so may lead to electric shock , fired or other injuries that could be hazardous or even fatal.

- Shut off the electricity to the wires that you are working on.
- Do not open,no user serviceable parts inside . Any changes or modifications and applications not expressly approved by the manufacturer could void the user's authority to operate the equipment and warranty.

#### WARNING

- Risk of fire or electric shock.
- LED retrofit kit installation requires knowledge of luminaires electrical systems . Do not attempt installation if not qualified. Contact a qualified electrician
- Install this kit only in the luminaires that have the construction features and dimensions shown in the photographs and / or drawings.
- Do not exceed the input rating of theluminaire.
- Do not make or alter any open holes in an enclosure of wiring or electrical components during kit installation.
- To prevent wiring damage or abrasion, do not expose wiring to edges of sheet metal or other sharp objects.
- This device is not intended for use with emergency exits
- This luminaire has not been modified to operate LED Lamp . Do not attempt to install or operate incandescent lamps or CFL in this luminaire.
- This retrofit kit is accepted as a component of a luminaire where the suitability of the combination shall be determined by authorities having jurisdiction.

#### CAUTION

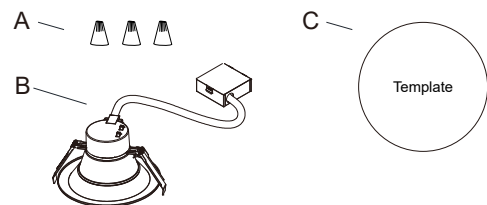
Connect fixture to a 120v / 60HZ power source . Any other connection voids the warranty .

This device complies with Part 15 of the FCC rules. Operation is subject to the following two conditions

- 1) this device may not cause harmful interference
- 2) this device must accept any interference received ,including interference that may cause undesired operation.

3

### PACKAGE CONTENT



	PARTS	QTY
A	Wire Nut	3
B	Down lamp	1
C	Template	1

### WARRANTY

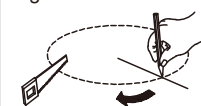
This product is warranted for 5 years from the date of purchase. If this product does not perform to the specifications supplied on this package, send an email to [support@lightingsquared.com](mailto:support@lightingsquared.com) for product return and replacement. This replacement is the sole remedy available. Liability for incidental or consequential damage is expressly excluded.

2

### CONSTRUCTION INSTALLATION

Make sure the POWER IS TURNED OFF when you are installing the product.

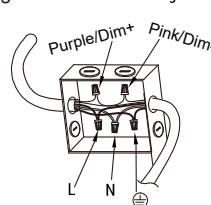
Fig.1



1. Locate a suitable position to place the super thin LED fixture and open a hole in accordance to the cut-hole dimensions(use the Hole Size Template provided)

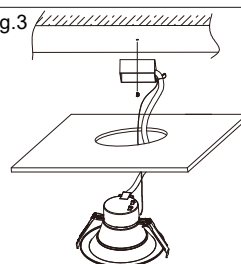
Fig.2

Connecting the wires



2. WITH THE POWER OFF, make electrical connections as shown in Fig 2 above.

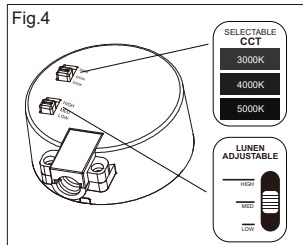
Fig.3



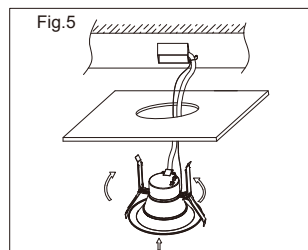
3. Fix the ceiling or other fixed parts of the junction box and hook the safety cord to the junction box or other place (Fig.3).

4

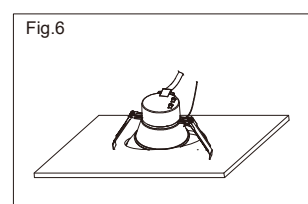
## CONSTRUCTION INSTALLATION



4. Use the color temperature toggle switch to select your desired lamp color temperature-Warm white(3000K), Cool white (4000K) or Daylight (5000K). Use the lumen and wattage adjustable toggle switch to adjust low(50%),medium(75%) or high(100%) (Fig 4)



5. Squeeze the two housing clips so they are in an upright position and insert lamp into housing (Fig.5).



6. Once lamp is inside the housing, release the housing clips and continue pushing lamp into housing until securely fixed and with ceiling (Fig.6).

**Note:** The junction box is fixed on the ceiling bracket.

## CONSTRUCTION INSTALLATION

### WARNING:

For wet location installation, after fixture is installed on ceiling, put silicone glue to seal the gap between fixture and ceiling.